

Gold Coast House Pattern



Oil Pattern Distance: 42 Feet **Reverse Brush Drop:** 41 Feet **Oil Per Board:** 50 uL
Forward Oil Total: 14.65 mL **Reverse Oil Total:** 11.6 mL **Volume Oil Total:** 26.25 mL
Forward Boards Crossed: 293 Boards **Reverse Boards Crossed:** 232 Boards **Total Boards Crossed:** 525 Boards

	Start	Stop	Loads	Speed	Crossed	Start	End	Feet	T.Oil
1	2L	2R	1	14	37	0.0	0.0	0.0	1850
2	8L	6R	1	14	27	0.0	1.9	1.9	1350
3	8L	8R	2	14	50	1.9	5.8	3.9	2500
4	9L	9R	3	18	69	5.8	13.4	7.6	3450
5	10L	10R	3	18	63	13.4	21.0	7.6	3150
6	12L	12R	2	18	34	21.0	26.1	5.1	1700
7	14L	14R	1	18	13	26.1	28.6	2.5	650
8	2L	2R	0	22	0	28.6	35.0	6.4	0
9	2L	2R	0	30	0	35.0	42.0	7.0	0

Forward Reverse More

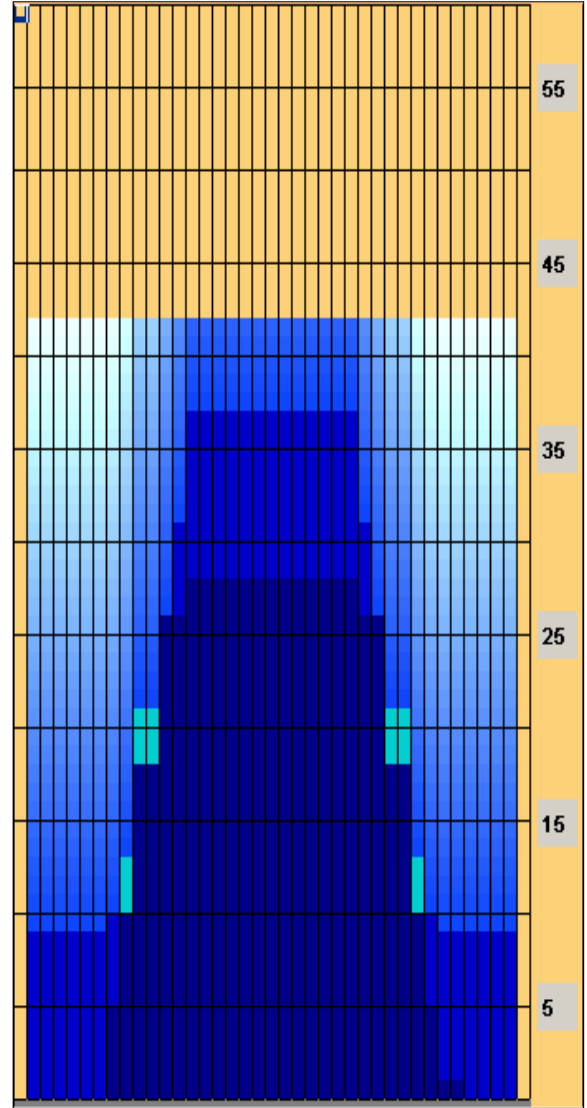
	Start	Stop	Loads	Speed	Crossed	Start	End	Feet	T.Oil
1	2L	2R	0	30	0	42.0	37.0	-5.0	0
2	14L	14R	2	22	26	37.0	30.8	-6.2	1300
3	13L	13R	2	18	30	30.8	25.7	-5.1	1500
4	12L	12R	3	18	51	25.7	18.1	-7.6	2550
5	10L	10R	3	18	63	18.1	10.5	-7.6	3150
6	8L	8R	1	14	25	10.5	8.6	-1.9	1250
7	2L	2R	1	14	37	8.6	6.7	-1.9	1850
8	2L	2R	0	10	0	6.7	0.0	-6.7	0

Forward Reverse More

Conditioner:
Kegel Fire

TransferType:
Transfer Brush

- Forward
- Reverse
- Combined
- Buff



Item	3L-7L:18L-18R	8L-12L:18L-18R	13L-17L:18L-18R	18L-18R:17R-13R	18L-18R:12R-8R	18L-18R:7R-3R
Description	Outside Track:Middle	Middle Track:Middle	Inside Track:Middle	Middle: Inside Track	Middle:Middle Track	Middle:Outside Track
Track Zone Ratio	12.5	1.92	1.02	1.02	1.92	10.42

